

A Walk to the Ice Cream Farm

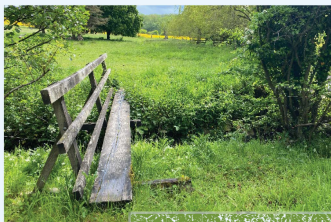
(1.4 miles)



This beautiful there-and-back walk takes you out of the Park on quiet paths over the fields to Coldeaton Jersey Ice Cream Farm & Sweet Shop on the edge of Ashbourne. The terrain is mostly flat and easy but there are some big stiles so make sure you have your best climbing legs on! Be aware that some parts of the walk might be a little bit muddy, especially after wet weather.

Directions

1. Leave the Park by the main entrance and turn left to walk on the footpath beside the road for a short way. Take great care here as the path is quite narrow and the road can be busy.



2. After approx 250 metres, as you approach the end of the brick wall, look out for a stile and footpath sign on the left. Cross the stile and then the little footbridge over a stream, and walk straight on across the field ahead.

3. Climb over the big stile to the left of a wide metal gate and go straight on through the next field.



4. The next stile is a little bit buried in the hedge you'll see straight ahead of you. Again, it's quite a big one, so climb over with care or ask an adult for help.



A Chair Fit for a King!

Look across the fields to the large house on your left. This is Sandybrook Hall. It was built more than 200 years ago in 1812, when King George III was the King of England. It's now a private home. Would

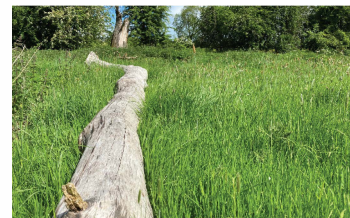


you like to live in a big, old house like this? There is a beautifully carved wooden chair under the trees on the left here, which makes a perfect throne!



As Easy As Falling Off a Log!

Straight ahead in the next field are some wonderful old logs lying on the ground. When logs are left on the ground they become great homes for wildlife, so stop for a while and have a look at how many little insects you can see living here. They also make great balance beams without far to fall - how far can you get along each log before you topple off?!



5. Walk straight on across this field and then head for a narrow gap in the far left corner of the hedge at the end. Go through two little wooden squeeze gaps, one after the other, that lead into the next field.

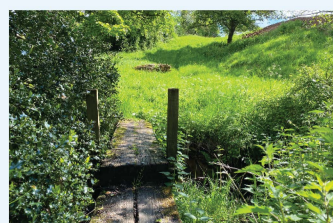


6. After walking through the second wooden squeeze gap, turn left and walk slightly uphill through the next field. Head for a stile about a third of the way along the tall hedge that's on your right hand side.



7. Cross over the stile with care and emerge into another field. This time you need to head diagonally right and walk towards the far right corner of the field, where you'll find a small gap in the hedge.

8. Go through the small gap and continue straight on, to walk through a tiny gate that leads to a pretty bridge.



9. Cross the bridge and then walk up the hill straight ahead of you. It's a bit steep so you'll need plenty of energy - but the ice cream farm is waiting at the top!



10. As you reach the top of the hill you will see the farm straight ahead of you. Walk through the field keeping the hedge on your left. You might be lucky enough to see some of the beautiful Jersey cows here. Don't worry if they come over to talk to you - they're very gentle.

11. Cross over a stile in a wooden fence straight ahead to enter a small orchard, and then climb another stile in the hedge 50 metres ahead. Turn right to see the ice cream shop in a wooden summer house straight ahead of you.



The Coldeaton Jersey Ice Cream shop sells ice cream, sweets, cakes, biscuits and drinks, as well as local honey, gifts and fresh Jersey milk. It operates on an honesty system and there may not be any staff around but you (or your grown-ups!) can pay by cash or card.

12. To return to the park, simply retrace your steps back over the stiles and through the fields, turning right when you eventually reach the road.

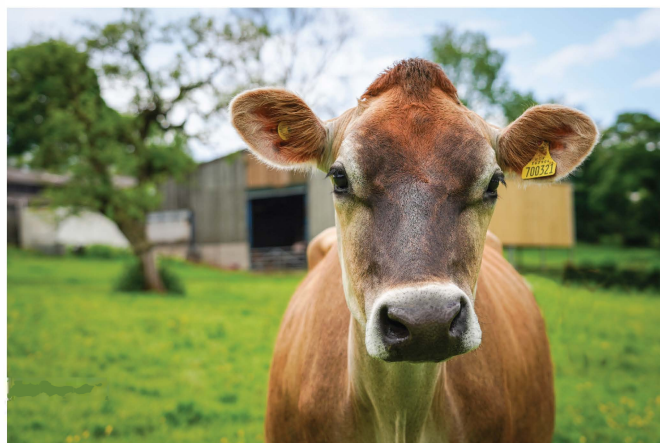
Did you know?

Jersey cows originally come from the island of Jersey, the largest of the Channel Islands close to northern France.

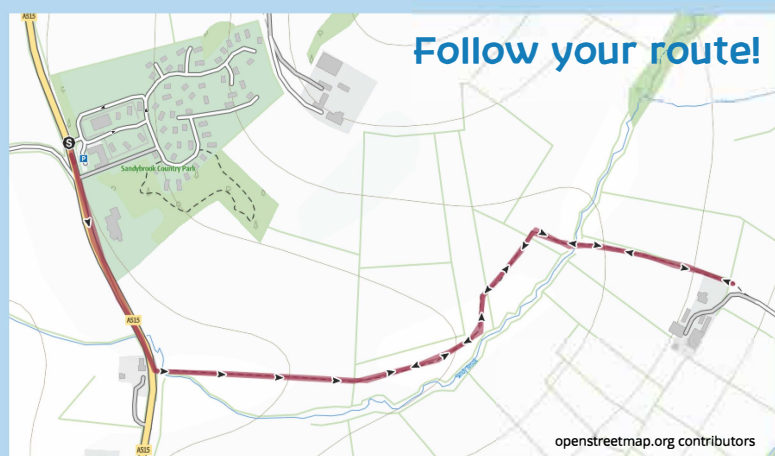
Jersey cows come in a variety of brown colours, ranging from light tan to almost black. They have beautiful eyes and tremendous eyelashes!

A Jersey cow's milk is rich and creamy, with 18% more protein and 20% more calcium than milk obtained from most other breeds. That's why it makes particularly delicious ice cream!

Jersey cows are one of the longest living cattle breeds, often reaching the age of 25 years old and beyond. The oldest Jersey cow lived until she was 37.



Follow your route!



Distance: 1.4 miles (2.25 kms)

Time: 1 hour

Grade: Easy

Terrain: Field paths

Accessibility: Uneven ground, stiles